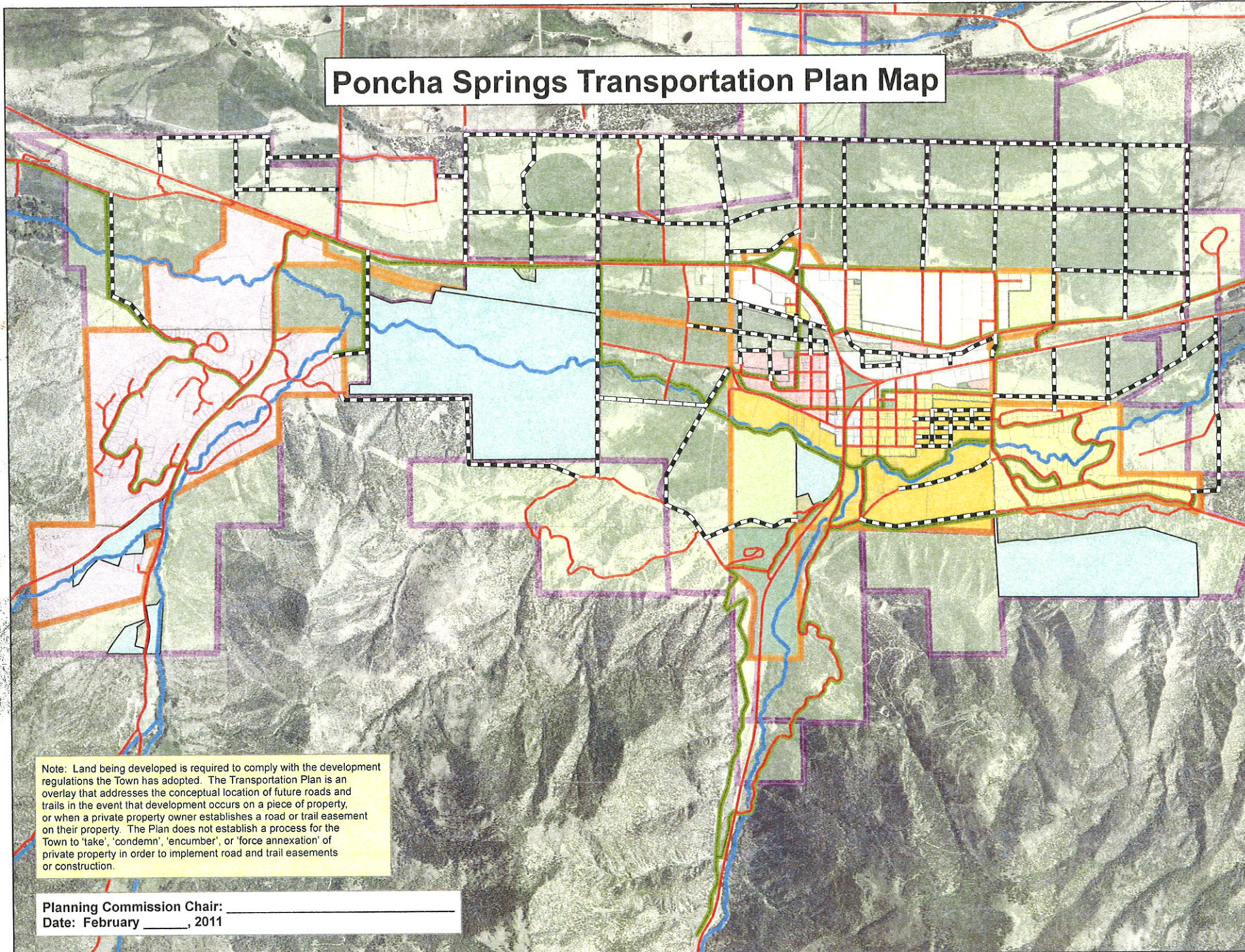


# Poncha Springs Transportation Plan Map



## Legend

- PS\_Future\_Roads
- Established\_Roads
- PS\_Trail\_Plan
- HydroChaffee
- Conservation\_Easements
- PS\_Town\_Limits
- PS\_MSA\_MGA\_rev
- PS\_Zones**
  - DIO
  - DIR
  - DRA
  - DRB
  - DREC
  - EHC
  - ER1
  - ER2
  - ER3
  - ESCI
  - ETC
  - POS
  - PUD
  - POS

Note: Land being developed is required to comply with the development regulations the Town has adopted. The Transportation Plan is an overlay that addresses the conceptual location of future roads and trails in the event that development occurs on a piece of property, or when a private property owner establishes a road or trail easement on their property. The Plan does not establish a process for the Town to 'take', 'condemn', 'encumber', or 'force annexation' of private property in order to implement road and trail easements or construction.

Planning Commission Chair: \_\_\_\_\_  
Date: February \_\_\_\_\_, 2011