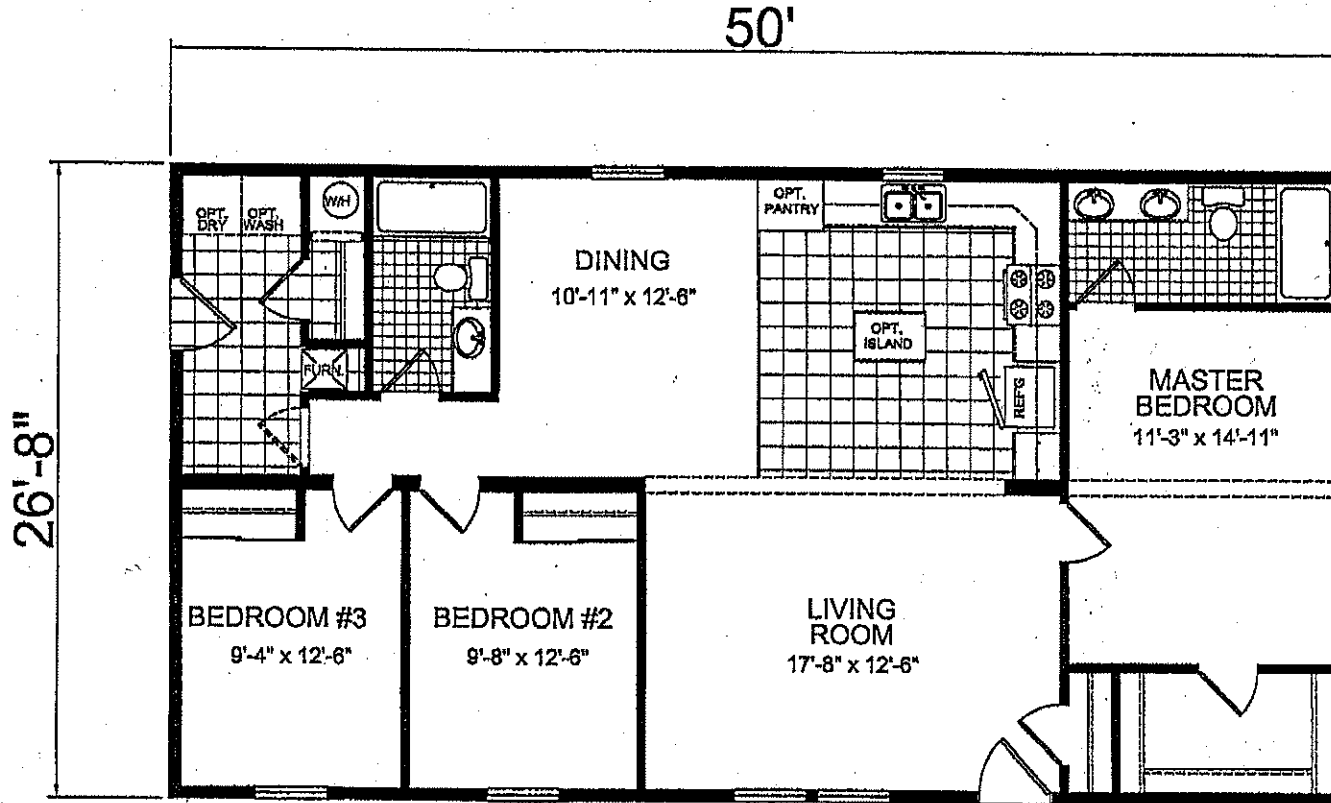


MODEL 05-N854

3 BEDROOM, 2 BATH
 ACTUAL SIZE: 28'-8" x 50'-0"
 TOTAL AREA: 1333 SQ. FT.



**Redman
Homes**

3200 ENTERPRISE AVE. YORK, NE 68467

DAPIA SEAL

MODIFICATIONS

MODEL: 005-N854
 28' x 54' 3 BEDROOM 2 BATH

SHEET:

TITLE: LITERATURE PLAN

L-101

PROPRIETARY AND CONFIDENTIAL
 THESE DRAWINGS AND SPECIFICATIONS ARE ORIGINAL
 PROPRIETARY AND CONFIDENTIAL MATERIALS OF CHAMPION
 COPYRIGHT © 1978-2008 BY CHAMPION

DRAWN BY: STAFF

DATE: 01-25-11

SCALE: 1/8" = 1'-0"

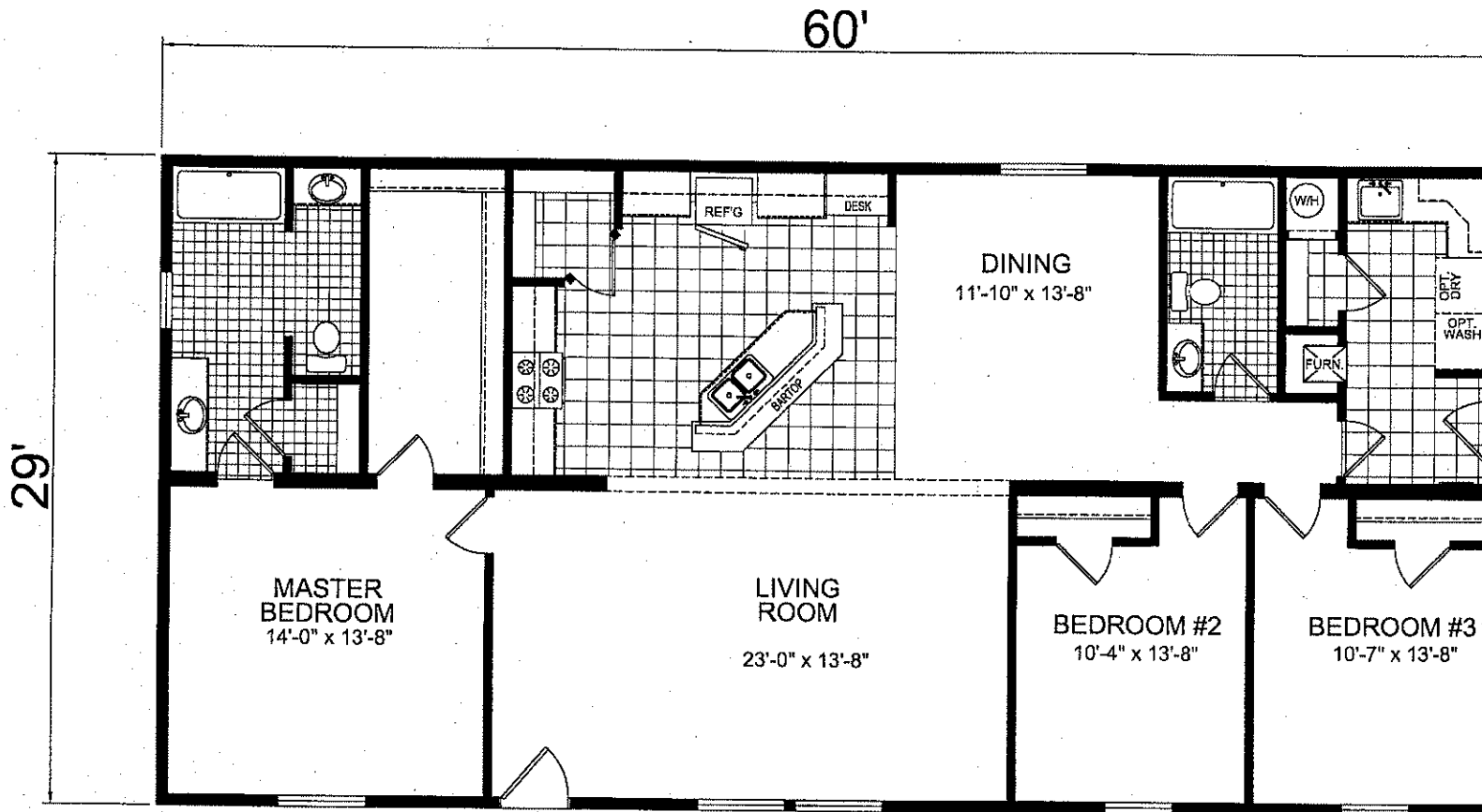
MODEL 05-N960

"THE COLUMBUS"

3 BEDROOM, 2 BATH

ACTUAL SIZE: 29'-0" x 60'-0"

TOTAL AREA: 1740 SQ. FT.



DAPIA SEAL

MODIFICATIONS

MODEL: 05-(C)N960
32' x 64' 3 BEDROOM 2 BATH

SHEET:

TITLE: LITERATURE PLAN

L-101

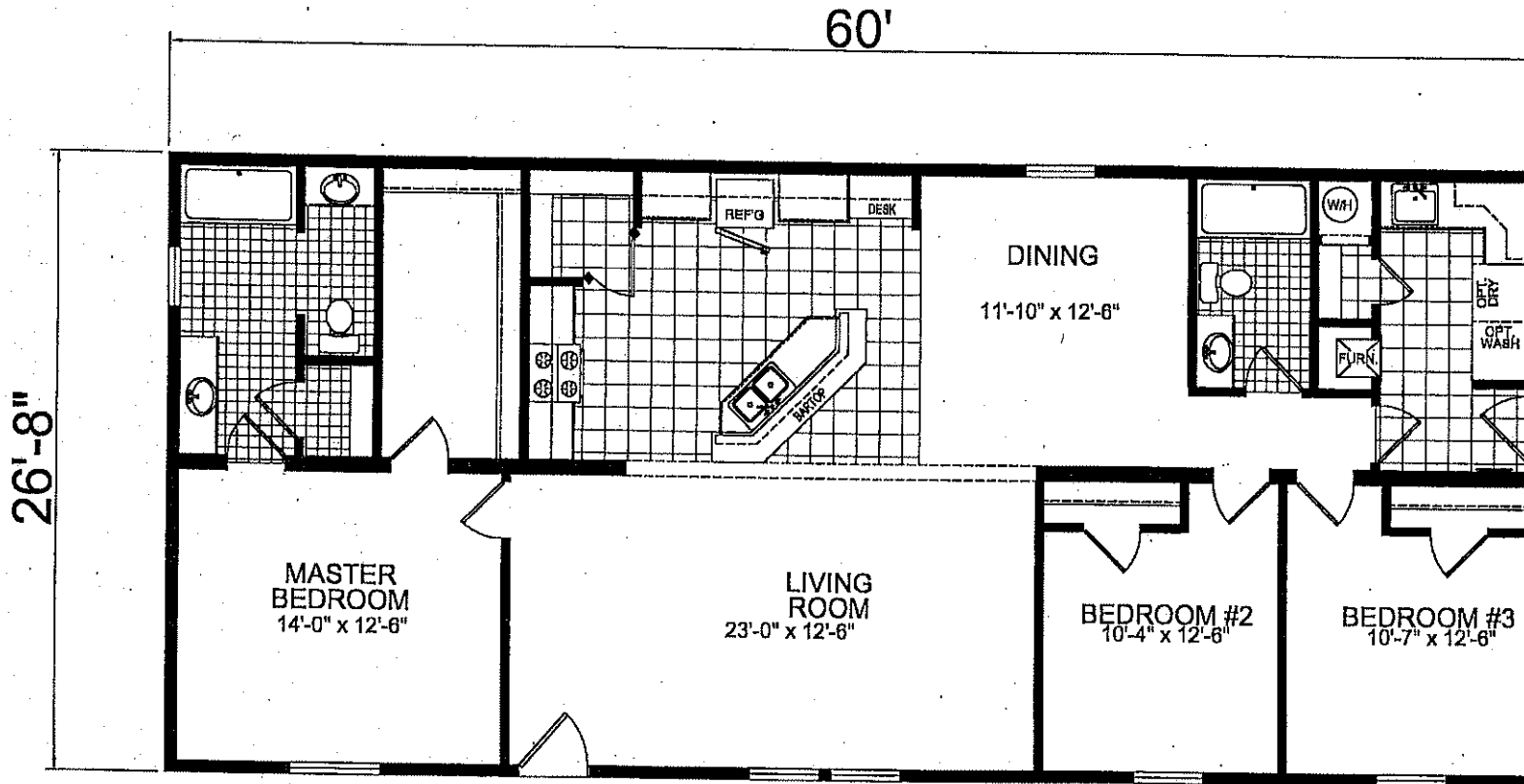
PROPRIETARY AND CONFIDENTIAL
THESE DRAWINGS AND SPECIFICATIONS ARE ORIGINAL,
PROPRIETARY AND CONFIDENTIAL MATERIALS OF CHAMPION.

DRAWN BY: STAFF

DATE: 01-25-11

MODEL 05-N860

3 BEDROOM, 2 BATH
 ACTUAL SIZE: 26'-8" x 60'-0"
 TOTAL AREA: 1600 SQ. FT.



DAPIA SEAL

MODIFICATIONS

MODEL: 05-(C)N860
 28' x 60' 3 BEDROOM 2 BATH

SHEET:

TITLE:
 LITERATURE PLAN

L-101

PROPRIETARY AND CONFIDENTIAL
 THESE DRAWINGS AND SPECIFICATIONS ARE ORIGINAL
 PROPRIETARY AND CONFIDENTIAL MATERIALS OF CHAMPION.

DRAWN BY: STAFF

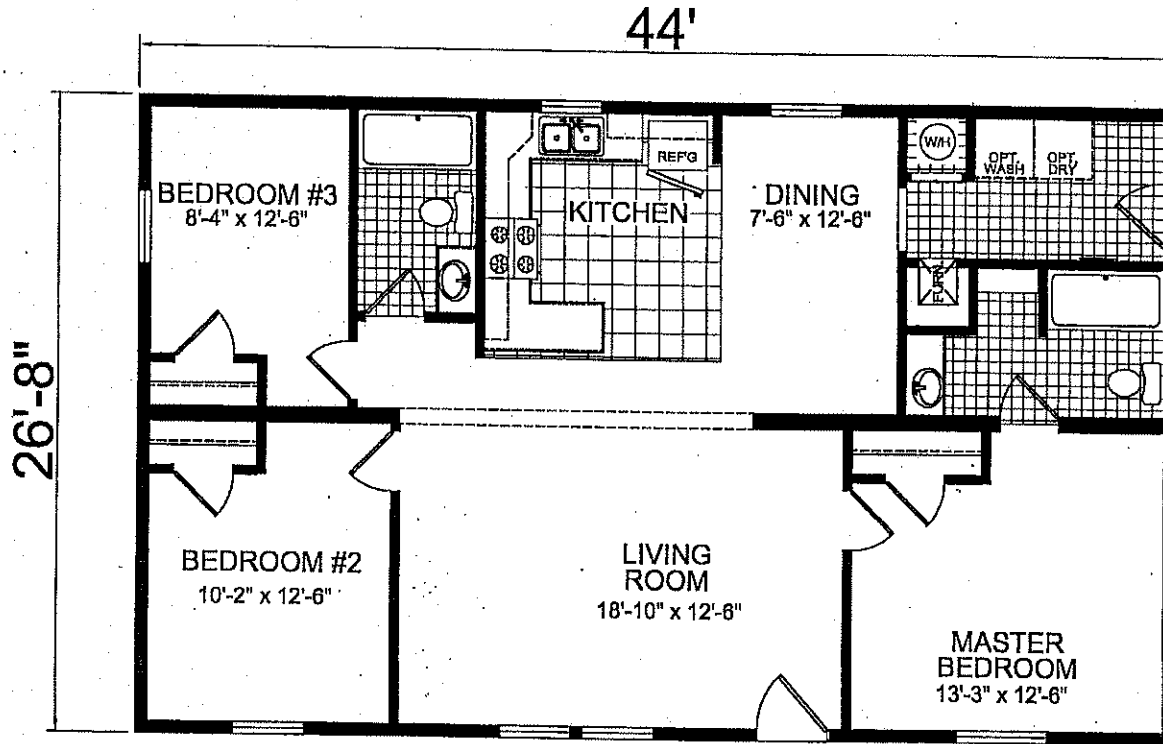
DATE: 01-25-11

MODEL 05-(C)N844

3 BEDROOM, 2 BATH

ACTUAL SIZE: 26'-8" x 44'-0"

TOTAL AREA: 1174 SQ. FT.



CHAMPION

DAPIA SEAL

MODIFICATIONS

MODEL: 05-(C)N844

28' x 44' 3 BEDROOM 2 BATH

TITLE: LITERATURE PLAN

SHEET:

L-101

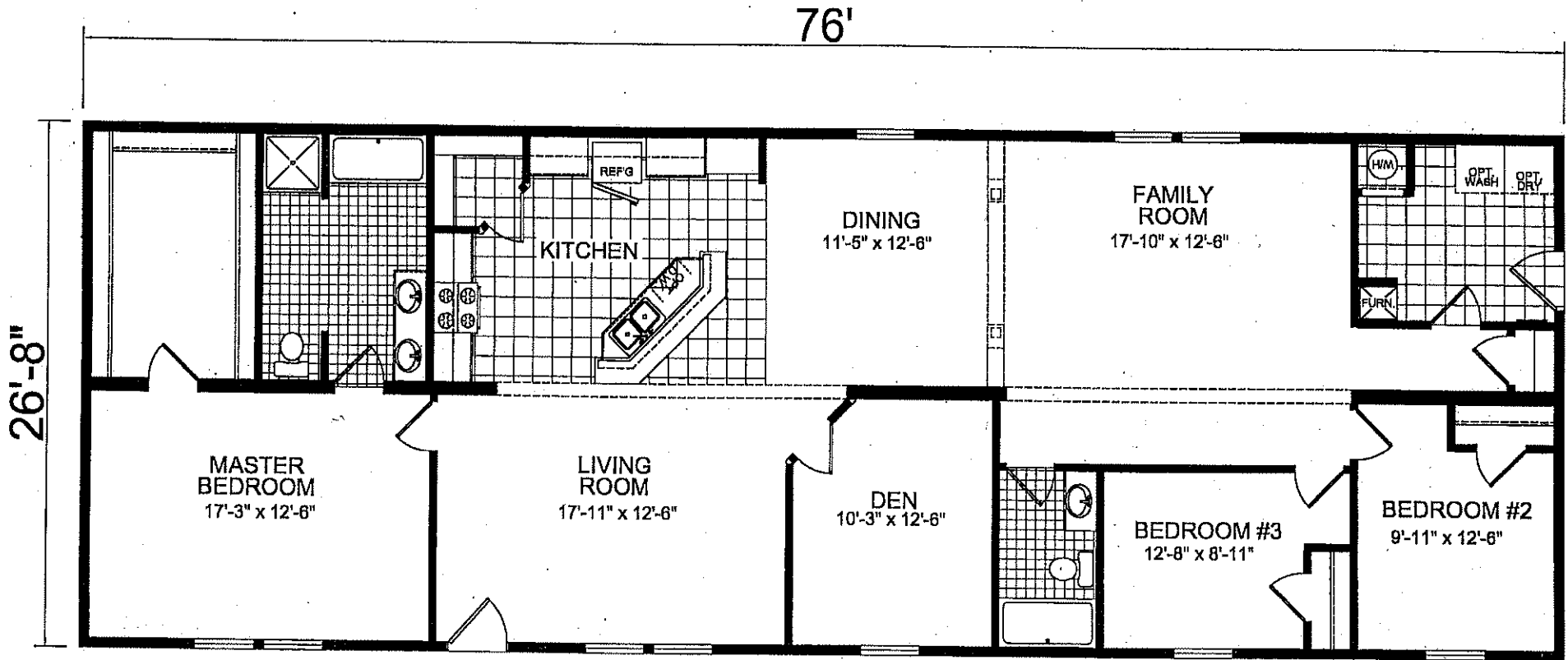
PROPRIETARY AND CONFIDENTIAL
THESE DRAWINGS AND SPECIFICATIONS ARE ORIGINAL
PROPRIETARY AND CONFIDENTIAL MATERIALS OF CHAMPION.

DRAWN BY: BD

DATE: 02-16-11

MODEL 05-(C)N876

3 BEDROOM, 2 BATH
 ACTUAL SIZE: 26'-8" x 76'-0"
 TOTAL AREA: 2027 SQ. FT.



DAPIA SEAL

MODIFICATIONS

MODEL: 05-(C)N876
 28x78 3 BEDROOM 2 BATH

SHEET:

TITLE: LITERATURE PLAN

L-101

PROPRIETARY AND CONFIDENTIAL
 THESE DRAWINGS AND SPECIFICATIONS ARE ORIGINAL
 PROPRIETARY AND CONFIDENTIAL MATERIALS OF CHAMPION.

DRAWN BY: BD

DATE: 02-16-11